

# K.T.



## ***KAM TAI Floor Trunking Systems***

**KAM TAI PRODUCT (HK) CO., LTD.**

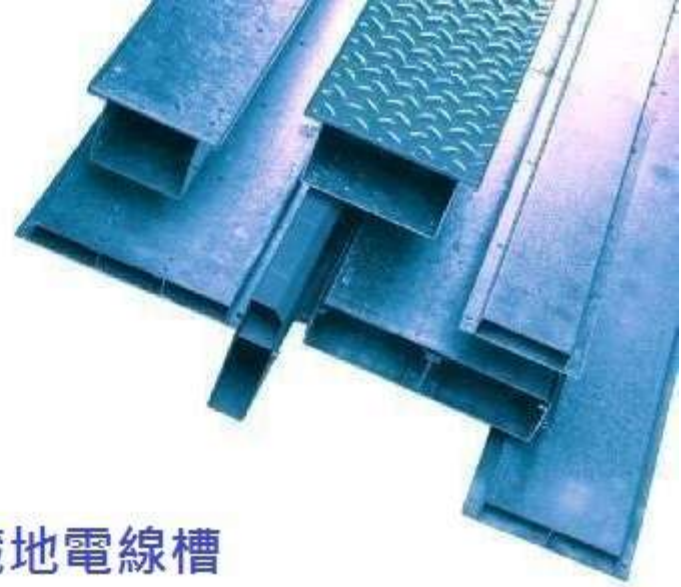
G/F 148, TEXACO ROAD, LUNG SING FACTORY BUILDING,  
TSUEN WAN, N.T., HKSAR

Website: [www.ktp-hk.com](http://www.ktp-hk.com) E-mail: [cs@ktp-hk.com](mailto:cs@ktp-hk.com)





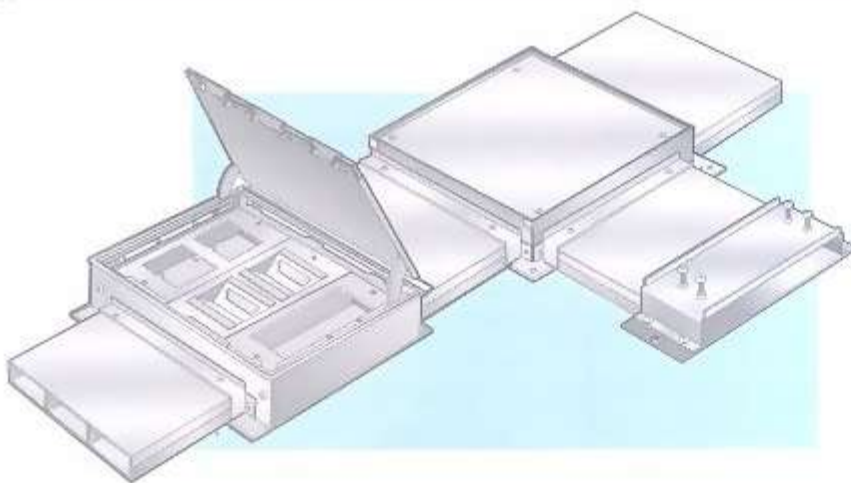
# K.T.



## KAM TAI 金泰 地槽系列

### FLOOR TRUNKING - UT SERIES

### Underfloor Trunking Systems 藏地電線槽



#### Materials: (材質)

Galvanized steel to BS4678 Part 1 : Class 3 to BS EN 10143 (275/gm)

鍍鋅符合英國 BS4678 第1章3級抗蝕保護

Mild Steel to BS 1449-1 and Hot-Dipped Galvanized finishing to ISO 1461

熱浸鋅水符合ISO 1461 防鏽級別

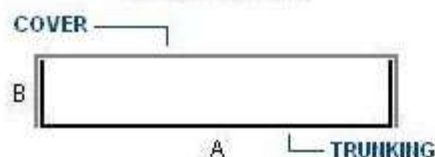
原料符合英國 BS1449-1 標準

Stainless Steel to SS304 or SS316.

不鏽鋼原料符合 SS304 或 SS316 標準

#### 標準型

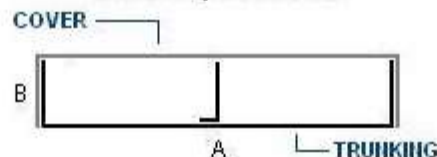
##### STANDARD



UT + / standard code

#### 分雙格

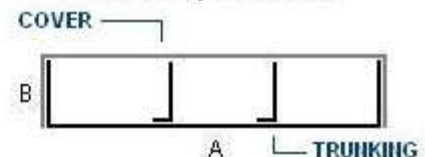
##### 2-Compartment



UT + / standard code + / 2C

#### 分三格

##### 3-Compartment



UT + / standard code + / 3C



#### Trunking:

Each length is 2.44m and supplied with Turnbuckle fixed or Spring clip fixed cover, coupler, fixing screws and earth link

標準長度 (2.44米) 配件包括: 槽駁片, 螺絲, 水線片及夾仔槽蓋 或 肚臍槽蓋

Extra length 0.6m / 1.2m / 1.8m available to clients order

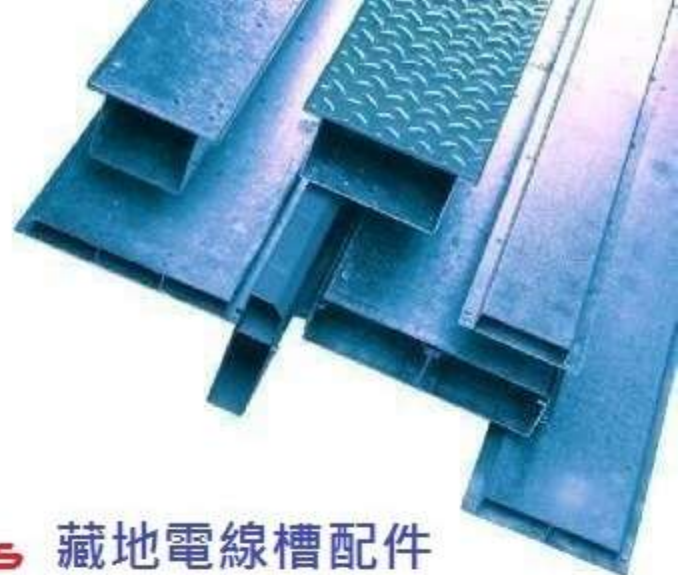
可訂製其它長度

#### Technical specifications and comply standard

Non standard thickness and finishes available to clients order.

Comply IEC 61084-1 and IEC 60529 (IP X4) standard

# K.T.



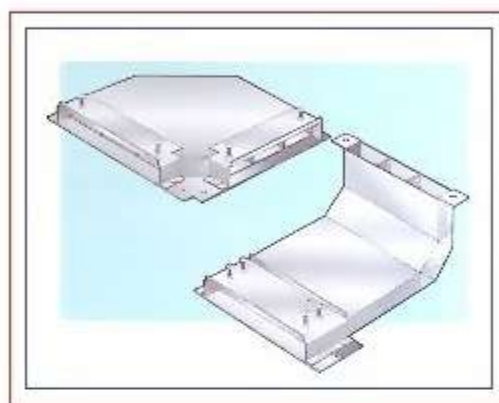
**KAM TAI** 金泰 地槽系列

**FLOOR TRUNKING - UT SERIES**

**Underfloor Trunking Accessories** 藏地電線槽配件

90 度 曲

**90 degree bend**  
Standard code + / FB

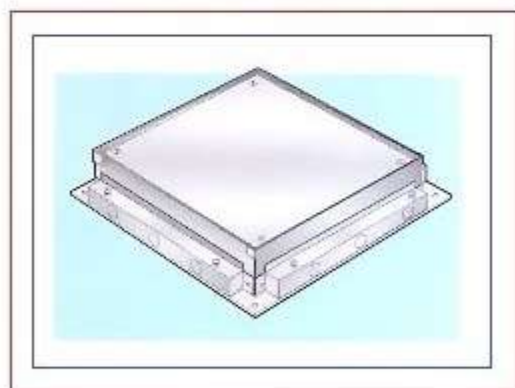


上昇 曲位

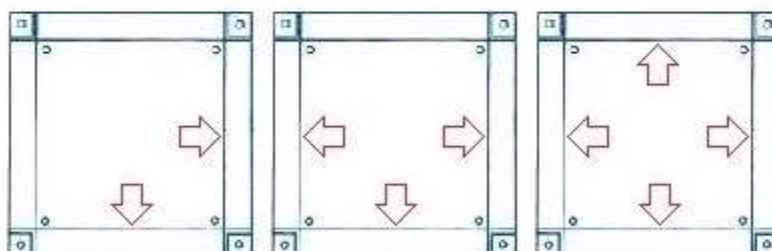
**Riser Bend**  
Standard code + / RB

地槽箱

**Junction Box**

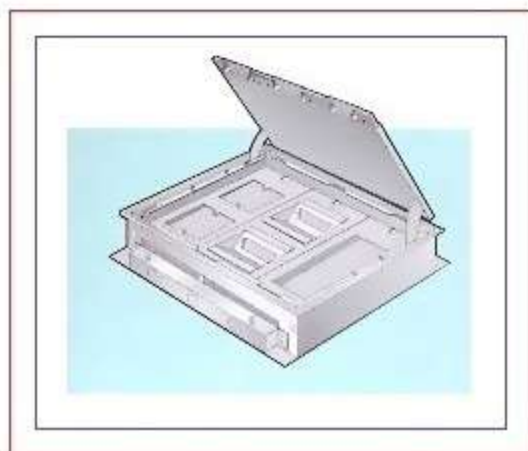


Easily for cable arrangement,  
available to straight run, 90 degree, tee, cross & flexible  
conduit outlet



插座箱

**Service Box**





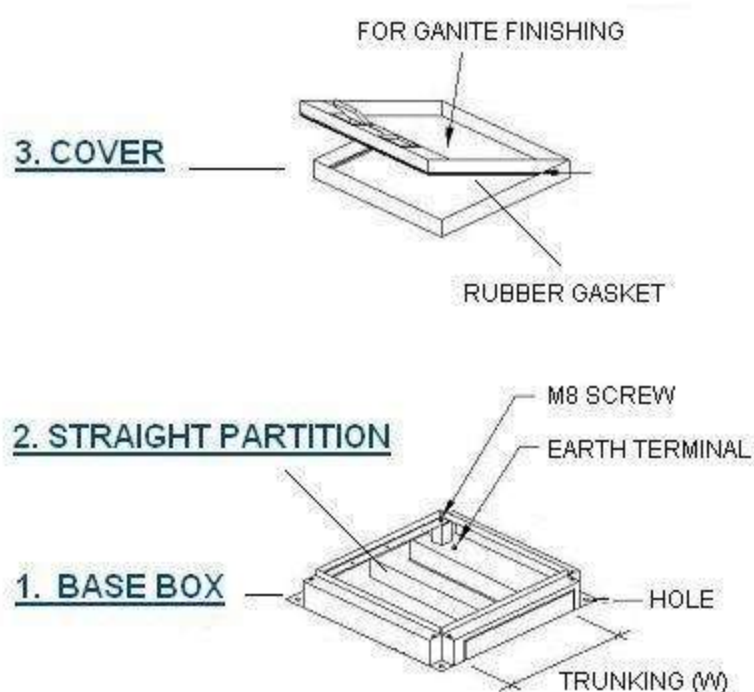
# K.T.

**KAM TAI Floor Trunking Systems**

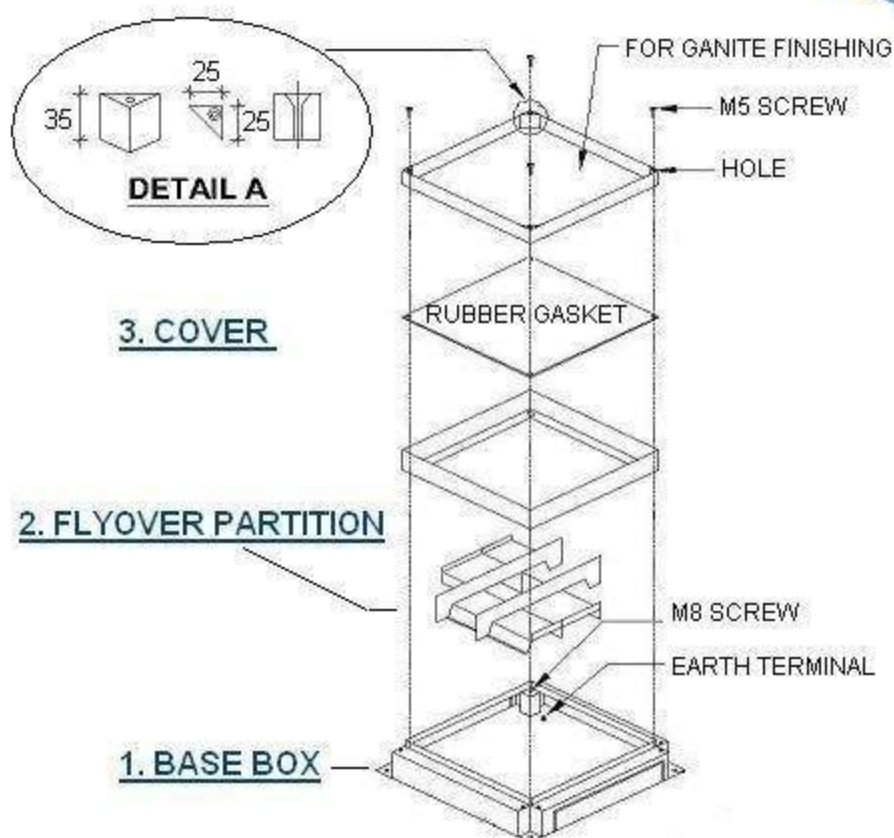


## SOCKET OUTLET BOX & JUNCTION BOX ( 2-compartment TYPE )

**"UT SERIES"**



### SOCKET OUTLET BOX



### JUNCTION BOX

| 1. BASE BOX | 2. PARTITION   | 3. COVER  |
|-------------|--|---|
| (KTFB)      | <div data-bbox="688 1661 749 1744">2d<br/>(/S)</div> <div data-bbox="856 1661 917 1744">2e<br/>(/B)</div> <div data-bbox="1035 1661 1085 1744">2f<br/>(/F)</div> | <div data-bbox="1268 1661 1329 1744">3a<br/>(/OC)</div> <div data-bbox="1465 1661 1526 1744">3b<br/>(/JC)</div>                   |
|             | <div data-bbox="677 1970 766 2001">Straight</div> <div data-bbox="826 1970 946 2001">90 degree</div> <div data-bbox="987 1970 1125 2001">Tee &amp; Cross</div>   | <div data-bbox="1220 1970 1358 2030">OUTLET BOX<br/>COVER</div> <div data-bbox="1430 1970 1609 2030">JUNCTION BOX<br/>COVER</div> |

Standard Product Code : 1 + ( 2a or 2b or 2c ) + ( 3a or 3b ) + Trunking Size

( 1 )

( 2a )

( 3a )

( Trunking Size )

i.e. : Base box + Straight partition + Outlet box cover + ( 200 x 50mm ) Trunking is **KTFB/S/OC/200x50**



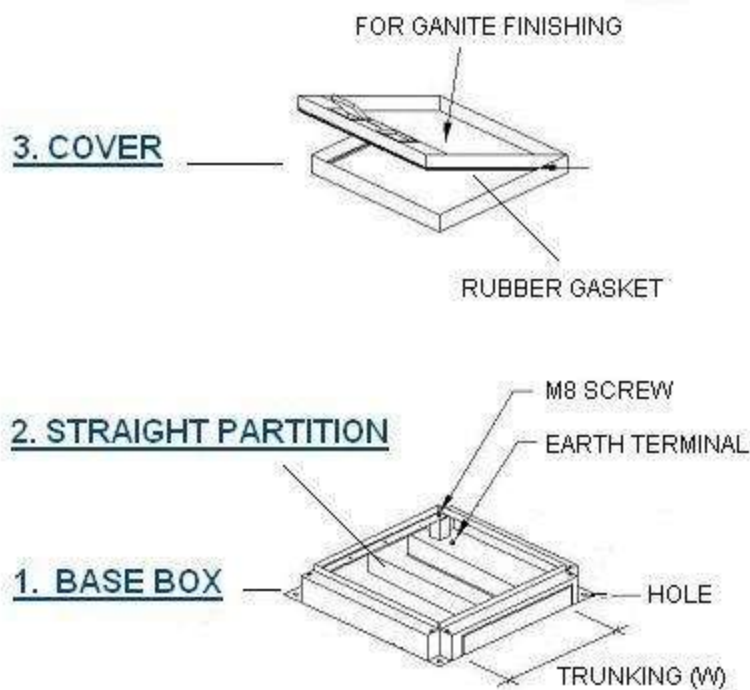
# K.T.

KAM TAI Floor Trunking Systems

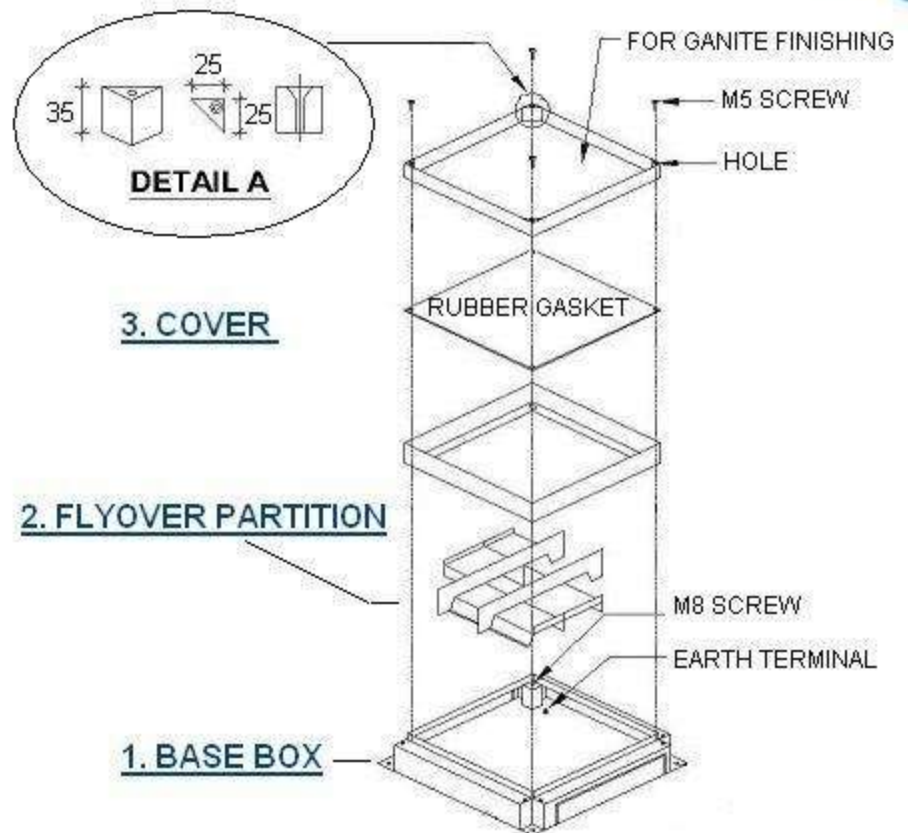


## SOCKET OUTLET BOX & JUNCTION BOX ( 3-compartment TYPE )

**"UT SERIES"**



### SOCKET OUTLET BOX



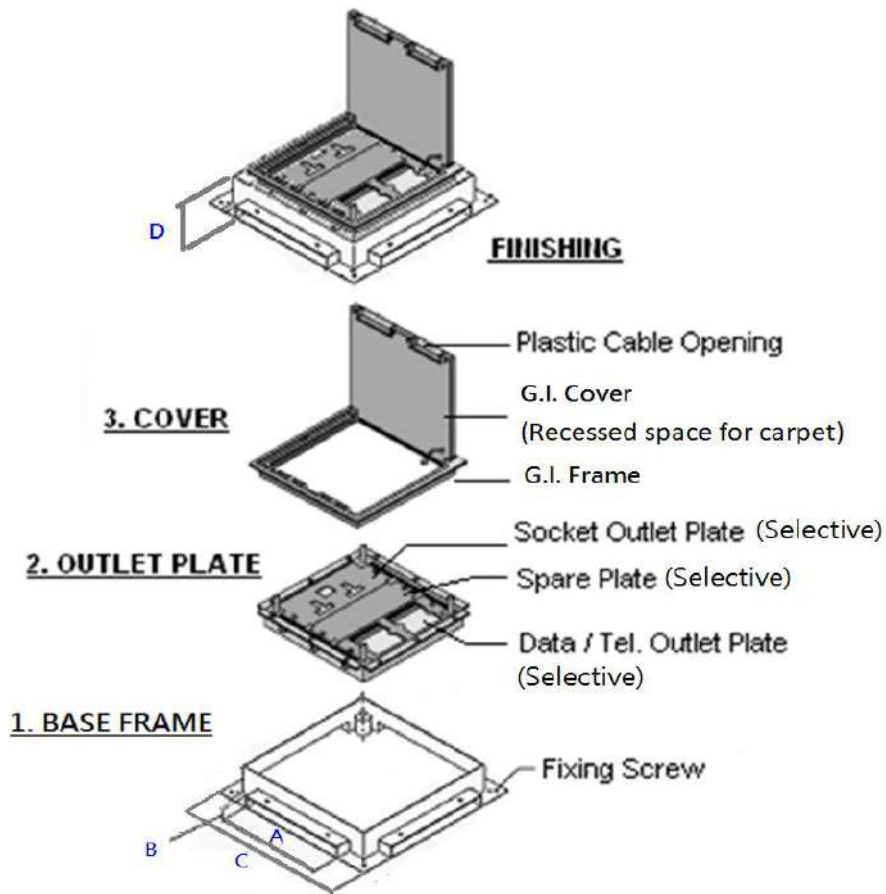
### JUNCTION BOX

| 1. BASE BOX | 2. PARTITION |            |             | 3. COVER            |                       |
|-------------|--------------|------------|-------------|---------------------|-----------------------|
| (KTFB)      | 2a<br>(/S)   | 2b<br>(/B) | 2c<br>(/F)  | 3a<br>(/OC)         | 3b<br>(/JC)           |
|             |              |            |             |                     |                       |
|             | Straight     | 90 degree  | Tee & Cross | OUTLET BOX<br>COVER | JUNCTION BOX<br>COVER |

Standard Product Code : 1 + ( 2a or 2b or 2c ) + ( 3a or 3b ) + Trunking Size

( 1 )                      ( 2a )                      ( 3a )                      ( Trunking Size )

i.e. : Base box + Straight partition + Outlet box cover + ( 300 x 50mm ) Trunking is **KTFB/S/OC/300x50**



### STANDARD UNDERFLOOR SERVICE BOX

**TABLE (A)**

| DESCRIPTION  | MATERIAL         | THICKNESS |
|--------------|------------------|-----------|
| BASE FRAME   | Galvanized Steel | 1.6mm     |
| OUTLET PLATE | Galvanized Steel | 1.2mm     |
| COVER        | Galvanized Steel | 2.5mm     |



**TABLE (B)**

| SIZE OF TRUNKING |                   |             |     | DIMENSION OF UF SERVICE BOX |       |     |     |
|------------------|-------------------|-------------|-----|-----------------------------|-------|-----|-----|
| Width            | Height            | Compartment |     | A                           | B     | C   | D   |
| 400              | 75 / 50 / 40 / 25 | 2/C         | 3/C | 400                         | H+1.5 | 490 | 100 |
| 300              | 75 / 50 / 40 / 25 | 2/C         | 3/C | 300                         | H+1.5 | 390 | 100 |
| 200              | 75 / 50 / 40 / 25 | 2/C         | 3/C | 200                         | H+1.5 | 390 | 100 |
| 400              | 50 / 40 / 25      | 2/C         | 3/C | 400                         | H+1.5 | 490 | 80  |
| 300              | 50 / 40 / 25      | 2/C         | 3/C | 300                         | H+1.5 | 390 | 80  |
| 200              | 50 / 40 / 25      | 2/C         | 3/C | 200                         | H+1.5 | 390 | 80  |



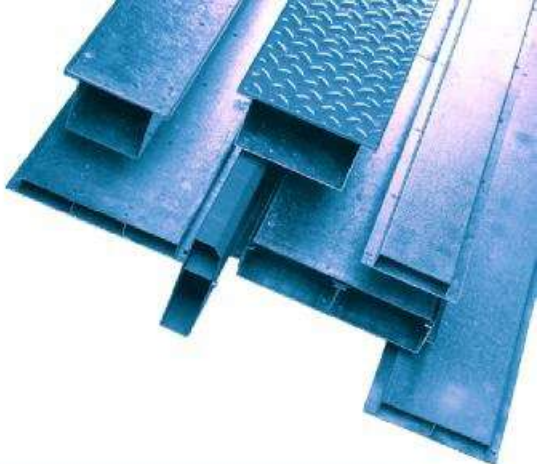
### **NOTE**

- 1./ ALL DIMENSION ARE IN mm UNLESS OTHERWISE SPECIFIED.
- 2./ THE DIMENSION OF UNDERFLOOR SERVICE BOX FOR EACH KIND OF TRUNKING, PLEASE REFER TABLE (B).
- 3./ 2NOS. OF EARTH TERMINAL WILL BE PROVIDED AT BASE FRAME
- 4./ COMPARTMENT(S) ARE USED FOR SEPARATE EL/ ELV SYSTEM APPLICATION.
- 5./ ADJUSTMENT OF COVER & FRAME LEVELING +/-10MM

## **TYPICAL DETIAL OF UNDERFLOOR TRUNKING SERVICE BOX**

|                                     |                             |
|-------------------------------------|-----------------------------|
| <b>KAM TAI PRODUCT (HK) CO LTD.</b> |                             |
| Product code :<br>CD/USB/4          |                             |
| Scale 5<br>N.T.S                    | Dimensions :<br>millimeters |
| Date :<br>25-Apr-11                 | Drawn by :<br>N.CHAN        |
| Drawing No.<br>UT-05                | Rev.                        |
| Material : Galvanized Steel+Plastic |                             |





## Finishes

### Pre - Galvanized

Continuous hot dip zinc coated steel sheet to BS4678, part 1 class 3. The base material is flat rolled sheet in coils suitably treated and annealed then passed through a bath of molten zinc. Minimum coating designation of G275 with a coating weight of 275 g/m<sup>2</sup> including both sides which equates to a zinc coating of 15.2 µm each side.

### Hot Dip Galvanized (Post - Galvanized)

Hot dip galvanized is in accordance with BS729 : 1971 or ISO 1460 / 1461. Details stated in the following table.

| BS729 : 1971 Material Thickness    | Coating Weight (Minimum Average) g/m <sup>2</sup> | Average Zinc Thickness (Microns) |
|------------------------------------|---|----------------------------------|
| 5mm thick and over                 | 610   | 85                               |
| Under 5mm but not less than 2mm    | 460   | 65                               |
| Under 2mm but not less than 1mm    | 335   | 47                               |
| Iron castings                      | 610   | 85                               |
| Centrifuged for threaded fasteners | 305   | 43                               |

### ISO 1460 / 1461

ISO 1461 coating minimum masses (related to thickness) on sample which are not centrifuged.

| Article and its thickness<br>mm | (a) Local coating (m/A) (minimum) |    | (b) Mean coating (m/A) (minimum) |    |
|---------------------------------|-----------------------------------|----|----------------------------------|----|
|                                 | g/m <sup>2</sup>                  | µm | g/m <sup>2</sup>                 | µm |
| Steel > 6 mm                    | 505                               | 70 | 610                              | 85 |
| Steel > 3 mm to < 6 mm          | 395                               | 55 | 505                              | 70 |
| Steel > 1.5 mm to < 3 mm        | 325                               | 45 | 395                              | 55 |
| Steel < 1.5 mm                  | 250                               | 35 | 325                              | 45 |
| Castings > 6 mm                 | 505                               | 70 | 575                              | 80 |
| Castings < 6 mm                 | 430                               | 43 | 505                              | 70 |

ISO 1461 coating minimum masses (related to thickness) on sample which are centrifuged.

| Article and its thickness<br>mm    | (a) Local coating (m/A) (minimum) |    | (b) Mean coating (m/A) (minimum) |    |
|------------------------------------|-----------------------------------|----|----------------------------------|----|
|                                    | g/m <sup>2</sup>                  | µm | g/m <sup>2</sup>                 | µm |
| Articles with threads              |                                   |    |                                  |    |
| > 20 mm diameter                   | 325                               | 45 | 395                              | 55 |
| > 6 - < 20 mm diameter             | 250                               | 35 | 325                              | 45 |
| < 6 mm diameter                    | 145                               | 20 | 180                              | 25 |
| Other articles (including coating) |                                   |    |                                  |    |
| < 3 mm                             | 325                               | 45 | 395                              | 55 |
| < 3 mm                             | 250                               | 35 | 325                              | 45 |

(a) **Local coating mass:** The value of coating mass obtained from a single gravimetric test.

(b) **Mean coating mass:** The average value of the coating masses determined either by using a control sample selected according to clause 5 with tests according to ISO 1460 or by conversion of the mean coating thickness. (The average value of the local thicknesses either on one large article or on all the articles in the control sample).

(c) **Sampling:** A control sample for thickness testing shall be taken randomly from each inspection lot selected for testing. The minimum number of articles from each inspection lot to form the control sample shall be according to the following table.

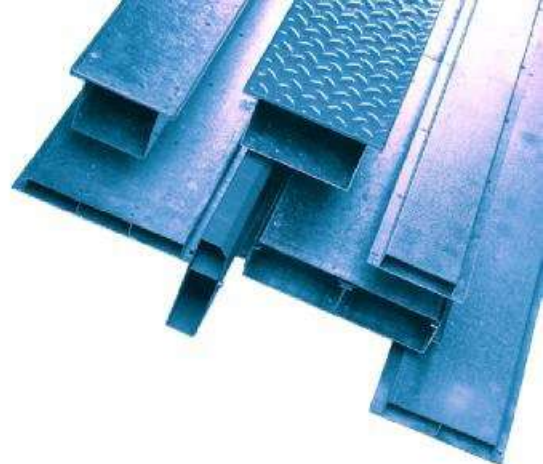
#### Control sample size related to lot size

| Number of articles in the lot | Minimum number or articles in the control sample |
|-------------------------------|--|
| 1 to 3                        | All  |
| 4 to 500                      | 3  |
| 501 to 1,200                  | 5  |
| 1,201 to 3,200                | 8  |
| 3,201 to 10,000               | 13   |
| > 10,000                      | 20   |

Acceptance inspection shall be undertaken before the products leave the hot dip galvanizer's factory, unless otherwise specified at the time of ordering by the purchaser.



**KAM TAI Floor Trunking Systems**



## Finishes

### Plascoat PPA571

PPA571 is a long lasting and tough coating for exterior application. It is **Halogen Free**, **low smoke** during combustion and **non toxic**. Technical specification shown as below.

|                                |                               |   |
|--------------------------------|-------------------------------|---|
| Appearance                     |                               | Smooth  |
| Coverage                       | (100% efficiency)             | min. 250 micron   |
| Tensile Strength               | ISO 527                       | 12 MPa  |
| Elongation at Break            | ISO 527                       | 800%  |
| Hardness                       | Shore A                       | 95  |
|                                | Shore D                       | 44  |
| Electrical Dielectric Strength | IEC 243 (1988)                | 14.5 KV/mm  |
| Breakdown Voltage              | IEC 243 (1988)                | 40 rms KV   |
| Salt Spray                     | ISO 7253 (ASTN B117)<br>Steel | Result after 1000 hrs<br>- Scribed Loss of adhesiobn less than 10mm from scribe.<br>Under film corrosion 2-3mm<br>No loss of adhesion |
|                                | - Unscribed                   |   |
| Chemical Resistance            | Dilute Acids & Alkali         | Good  |
| Adhesion                       | PSL, TM/9                     | A-1   |
| Weathering                     | QUV ISO 4892                  | 2000 hrs - No significant change in colour or loss of gloss   |
|                                | Florida 45° facing South      | 3 years - No significant change in colour or loss of gloss  |
| Burning characteristics        |                               |   |
| - Ignitability                 | BS476 : Pt5 : 1979            | P-not easily ignitable  |
| - Surface spread of flame      | BS476 : Pt7 : 1979            | Class 1   |
| - Fire Propagation             | BS476 : Pt6 : 1984            | I = 0.2   |

### Epoxy Powder Coated

Epoxy Powder Coating is a thermoset type powder coatings generally for interior use, providing very good decorative properties with excellent chemical resistance. These costings are not ideally suited to prolonged exterior exposure or for use at elevated temperatures. They are available in a range of glosses and colours and in a variety of texture finishes.

### Polyester Power Coated

Polyester Powder Coating is ideal for use on metallic building components such as aluminum profiles, sections and sheet, agricultural equipment, garden furniture and leisure products etc. The primary characteristic of polyester powder coating is its supreme colour and gloss-retention on external exposure.

### Other Finishes

Upon client request, stainless steel 304, 316 and Glass Reinforced Plastic material (GRP) will be supplied.



## FLOOR BOX ACCESSORIES PLATES



All standard floor boxes one plate for compartment.

**Ref 01**

**Blank plate**



**Ref 02**

**2 x 1 gang outlet**



**Ref 03**

**1 x 2 gang outlet**



**Ref 04**

**1 x 2 gang outlet dished**  
**\*15mm Height**  
*\* Height can be adjusted subject to client requested.*



**Ref 05**

**Blank plate dished**  
**\*15mm Height**  
*\* Height can be adjusted subject to client requested.*



**Ref 06**

**6 x LJ6C apertures**  
**(22.4 x 36.4mm)**



**Ref 07**

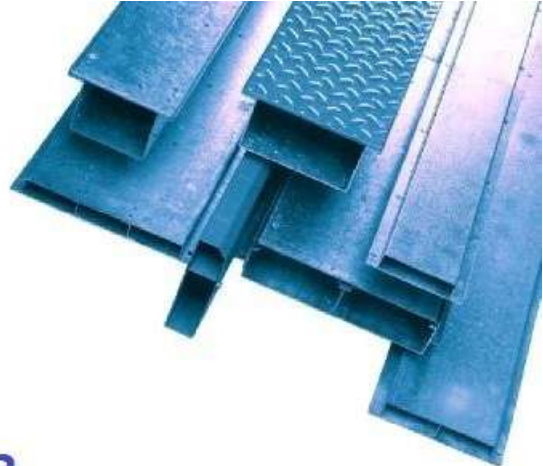
**4 x Alphasnap aperture**  
**23.5 x 47.5mm**



**Ref 08**

**4 x LJ6C apertures**  
**angled plate**





## Standard Product Code

| Trunking Size<br>A (mm) B | Available<br>Material Thickness (mm) | Standard Code |
|---------------------------|--------------------------------------|---------------|
| 50 x 25                   | 1.2 / 1.4 / 1.6 / 1.8 / 2.0          | 5025          |
| 75 x 25                   | 1.2 / 1.4 / 1.6 / 1.8 / 2.0          | 7525          |
| 100 x 25                  | 1.2 / 1.4 / 1.6 / 1.8 / 2.0          | 1025          |
| 150 x 25                  | 1.2 / 1.4 / 1.6 / 1.8 / 2.0          | 1525          |
| 200 x 25                  | 1.2 / 1.4 / 1.6 / 1.8 / 2.0          | 2025          |
| 300 x 25                  | 1.2 / 1.4 / 1.6 / 1.8 / 2.0          | 3025          |
| 400 x 25                  | 1.2 / 1.4 / 1.6 / 1.8 / 2.0          | 4025          |
| 500 x 25                  | 1.2 / 1.4 / 1.6 / 1.8 / 2.0          | 5025          |
| 600 x 25                  | 1.2 / 1.4 / 1.6 / 1.8 / 2.0          | 6025          |
| 50 x 40                   | 1.2 / 1.4 / 1.6 / 1.8 / 2.0          | 5040          |
| 75 x 40                   | 1.2 / 1.4 / 1.6 / 1.8 / 2.0          | 7540          |
| 100 x 40                  | 1.2 / 1.4 / 1.6 / 1.8 / 2.0          | 1040          |
| 150 x 40                  | 1.2 / 1.4 / 1.6 / 1.8 / 2.0          | 1540          |
| 200 x 40                  | 1.2 / 1.4 / 1.6 / 1.8 / 2.0          | 2040          |
| 300 x 40                  | 1.2 / 1.4 / 1.6 / 1.8 / 2.0          | 3040          |
| 400 x 40                  | 1.2 / 1.4 / 1.6 / 1.8 / 2.0          | 4040          |
| 500 x 40                  | 1.2 / 1.4 / 1.6 / 1.8 / 2.0          | 5040          |
| 600 x 40                  | 1.2 / 1.4 / 1.6 / 1.8 / 2.0          | 6040          |
| 50 x 50                   | 1.2 / 1.4 / 1.6 / 1.8 / 2.0          | 5050          |
| 75 x 50                   | 1.2 / 1.4 / 1.6 / 1.8 / 2.0          | 7550          |
| 100 x 50                  | 1.2 / 1.4 / 1.6 / 1.8 / 2.0          | 1050          |
| 150 x 50                  | 1.2 / 1.4 / 1.6 / 1.8 / 2.0          | 1550          |
| 200 x 50                  | 1.2 / 1.4 / 1.6 / 1.8 / 2.0          | 2050          |
| 300 x 50                  | 1.2 / 1.4 / 1.6 / 1.8 / 2.0          | 3050          |
| 400 x 50                  | 1.2 / 1.4 / 1.6 / 1.8 / 2.0          | 4050          |
| 500 x 50                  | 1.2 / 1.4 / 1.6 / 1.8 / 2.0          | 5050          |
| 600 x 50                  | 1.2 / 1.4 / 1.6 / 1.8 / 2.0          | 6050          |
| 75 x 75                   | 1.2 / 1.4 / 1.6 / 1.8 / 2.0          | 7575          |
| 100 x 75                  | 1.2 / 1.4 / 1.6 / 1.8 / 2.0          | 1075          |
| 150 x 75                  | 1.2 / 1.4 / 1.6 / 1.8 / 2.0          | 1575          |
| 200 x 75                  | 1.2 / 1.4 / 1.6 / 1.8 / 2.0          | 2075          |
| 300 x 75                  | 1.2 / 1.4 / 1.6 / 1.8 / 2.0          | 3075          |
| 400 x 75                  | 1.2 / 1.4 / 1.6 / 1.8 / 2.0          | 4075          |
| 500 x 75                  | 1.2 / 1.4 / 1.6 / 1.8 / 2.0          | 5075          |
| 600 x 75                  | 1.2 / 1.4 / 1.6 / 1.8 / 2.0          | 6075          |
| 100 x 100                 | 1.2 / 1.4 / 1.6 / 1.8 / 2.0          | 1010          |
| 150 x 100                 | 1.2 / 1.4 / 1.6 / 1.8 / 2.0          | 1510          |
| 200 x 100                 | 1.2 / 1.4 / 1.6 / 1.8 / 2.0          | 2010          |
| 300 x 100                 | 1.2 / 1.4 / 1.6 / 1.8 / 2.0          | 3010          |
| 400 x 100                 | 1.2 / 1.4 / 1.6 / 1.8 / 2.0          | 4010          |
| 500 x 100                 | 1.2 / 1.4 / 1.6 / 1.8 / 2.0          | 5010          |
| 600 x 100                 | 1.2 / 1.4 / 1.6 / 1.8 / 2.0          | 6010          |